



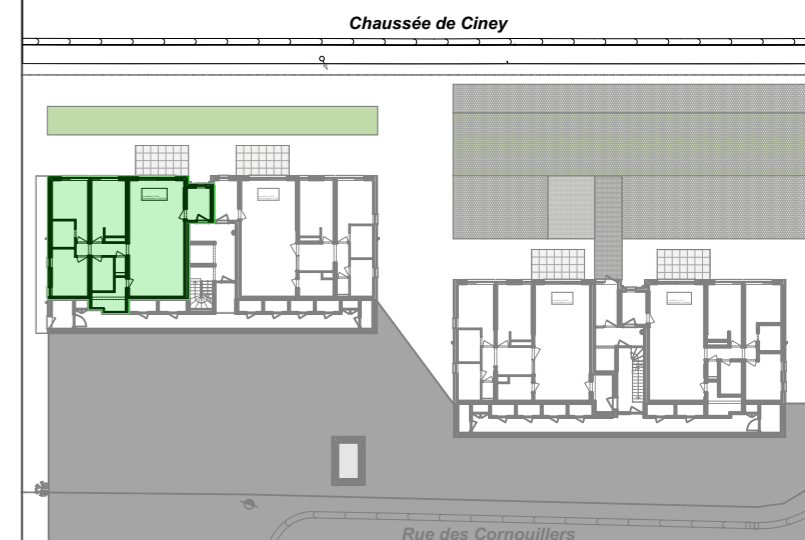
FACADE AVANT



FACADE ARRIERE

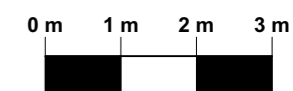


PLAN GENERAL



## APPARTEMENT L 1.1

NIVEAU :	CAVES / REZ-JARDIN
CHAMBRES :	3
PIECE(S) ANNEXE(S) :	DRESSING
SURFACE BRUTE :	118,37 m <sup>2</sup>
SURFACE NETTE :	99,88 m <sup>2</sup>
SURFACE TERRASSE :	10,08 m <sup>2</sup>
ECHELLE :	1/100

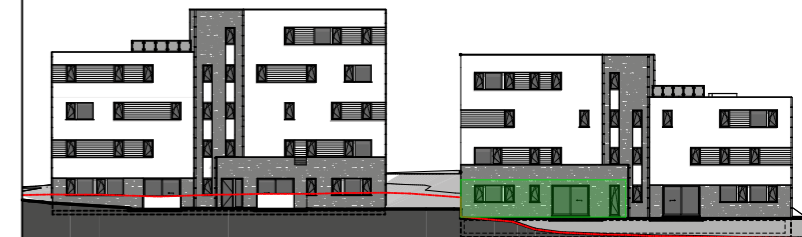


**ACCES**  
**HABITAT**  
PROMOTEUR

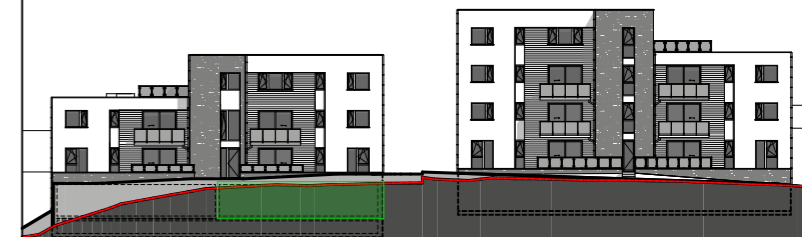
**UrbanÉco**  
APPARTEMENTS LUXUEUX,  
ÉCONOMES & ÉCOLOGIQUES



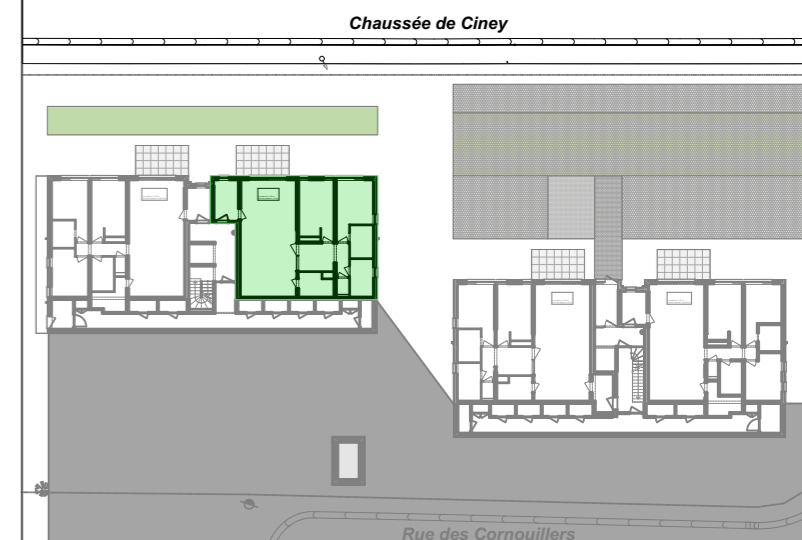
FACADE AVANT



FACADE ARRIERE

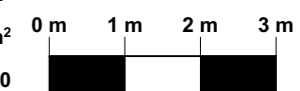


PLAN GENERAL



## APPARTEMENT L 1.2

NIVEAU :	CAVES / REZ-JARDIN
CHAMBRES :	2
PIECE(S) ANNEXE(S) :	BUREAU & DRESSING
SURFACE BRUTE :	116,30 m <sup>2</sup>
SURFACE NETTE :	97,64 m <sup>2</sup>
SURFACE TERRASSE :	10,08 m <sup>2</sup>
ECHELLE :	1/100

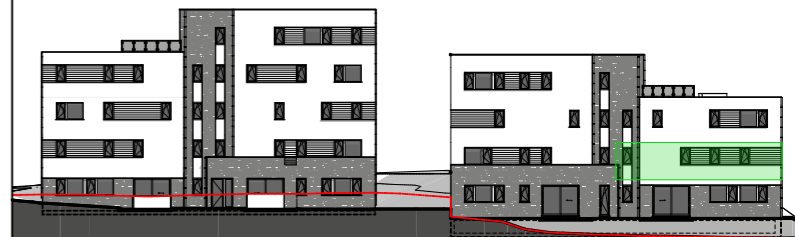


**ACCES**  
**HABITAT**  
PROMOTEUR

**UrbanÉco**  
APPARTEMENTS LUXUEUX,  
ÉCONOMES & ÉCOLOGIQUES



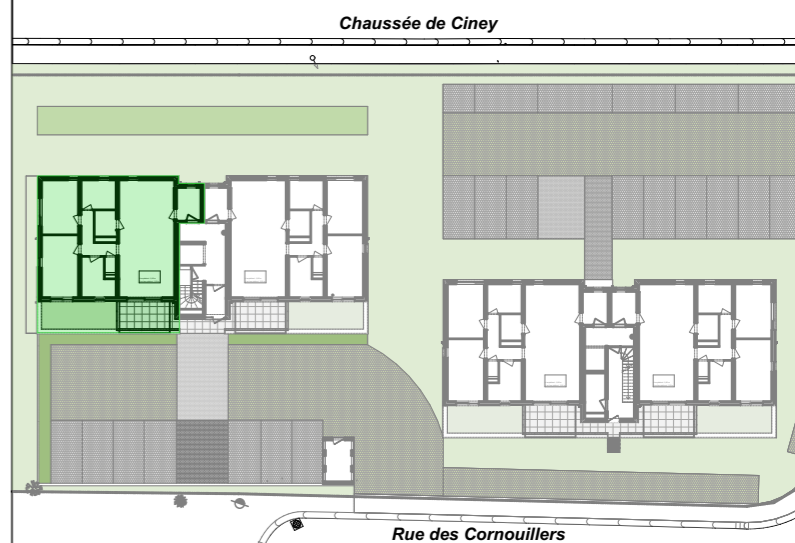
FACADE AVANT



FACADE ARRIERE

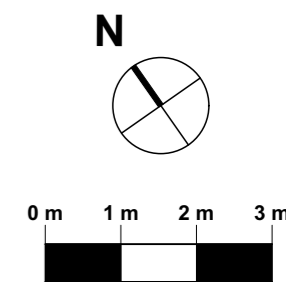


PLAN GENERAL



## APPARTEMENT L 1.3

NIVEAU :	RDC
CHAMBRES :	2
PIECE(S) ANNEXE(S) :	BUREAU
SURFACE BRUTE :	117,16 m <sup>2</sup>
SURFACE NETTE :	97,02 m <sup>2</sup>
SURFACE TERRASSE :	10,01 m <sup>2</sup>
ECHELLE :	1/100



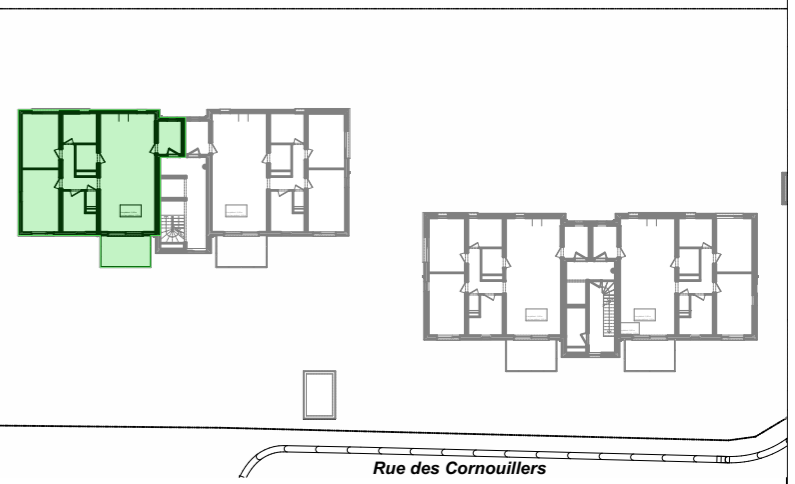
**ACCES**  
**HABITAT**  
PROMOTEUR

**UrbanÉco**  
APPARTEMENTS LUXUEUX,  
ÉCONOMES & ÉCOLOGIQUES



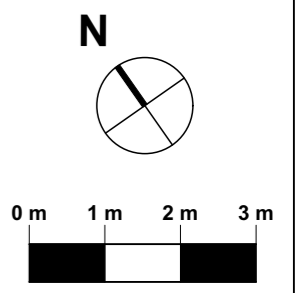


PLAN GENERAL  
Chaussée de Ciney



## APPARTEMENT L 1.5

NIVEAU :	ETAGE 1
CHAMBRES :	2
PIECE(S) ANNEXE(S) :	BUREAU
SURFACE BRUTE :	117,16 m <sup>2</sup>
SURFACE NETTE :	98,59 m <sup>2</sup>
SURFACE TERRASSE :	10,00 m <sup>2</sup>
ECHELLE :	1/100

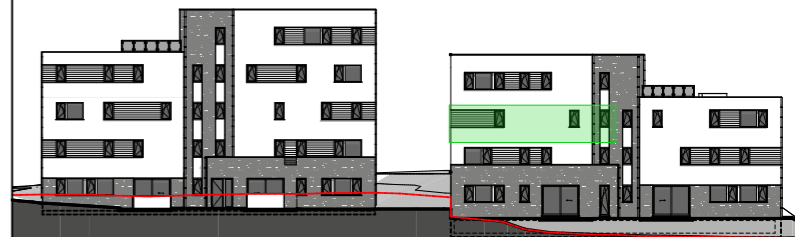


**ACCES**  
**HABITAT**  
PROMOTEUR

**UrbanÉco**  
APPARTEMENTS LUXUEUX,  
ÉCONOMES & ÉCOLOGIQUES



FACADE AVANT



FACADE ARRIERE



PLAN GENERAL

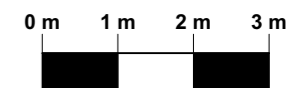
*Chaussée de Ciney*



*Rue des Cornouillers*

## APPARTEMENT L 1.6

NIVEAU :	ETAGE 1
CHAMBRES :	2
PIECE(S) ANNEXE(S) :	BUREAU
SURFACE BRUTE :	117,16 m <sup>2</sup>
SURFACE NETTE :	98,59 m <sup>2</sup>
SURFACE TERRASSE :	10,00 m <sup>2</sup>
ECHELLE :	1/100

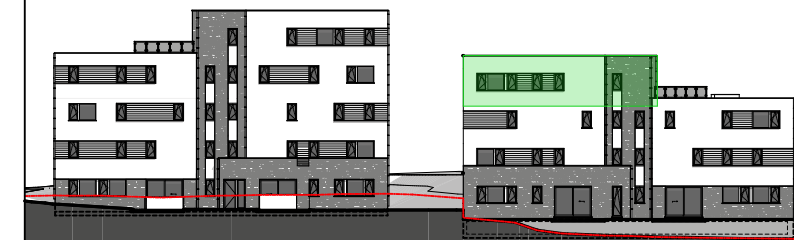


**ACCES**  
**HABITAT**  
 PROMOTEUR

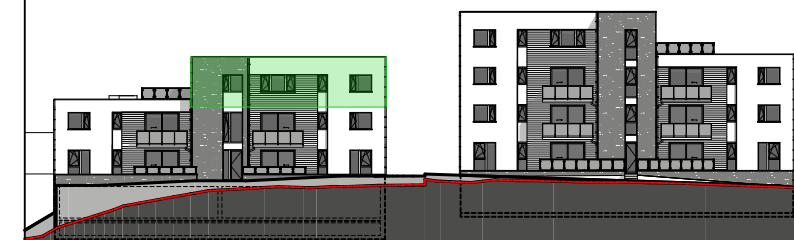
**UrbanÉco**  
 APPARTEMENTS LUXUEUX,  
 ÉCONOMES & ÉCOLOGIQUES



FACADE AVANT

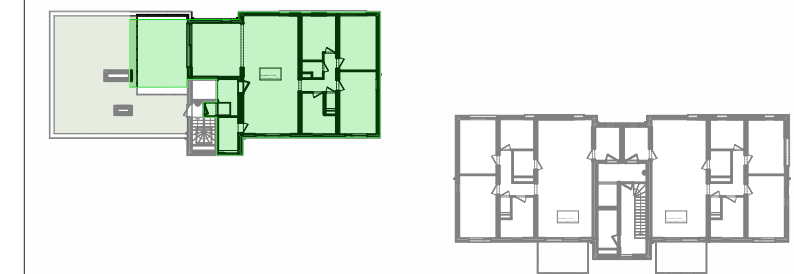


FACADE ARRIERE



PLAN GENERAL

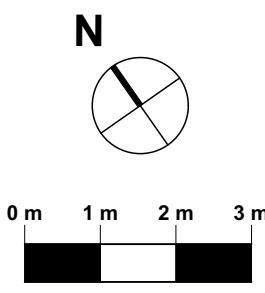
*Chaussée de Ciney*



*Rue des Cornouillers*

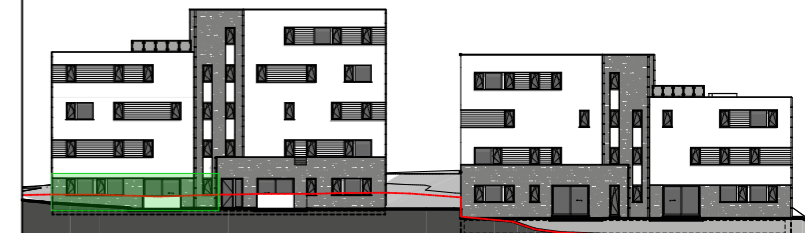
## APPARTEMENT L 1.7

NIVEAU : ETAGE 2  
 CHAMBRES : 3  
 PIECE(S) ANNEXE(S) : L. TECH. + BUANDERIE  
 SURFACE BRUTE : 143,91 m<sup>2</sup>  
 SURFACE NETTE : 121,71 m<sup>2</sup>  
 SURFACE TERRASSE : 25,00 m<sup>2</sup>  
 ECHELLE : 1/100

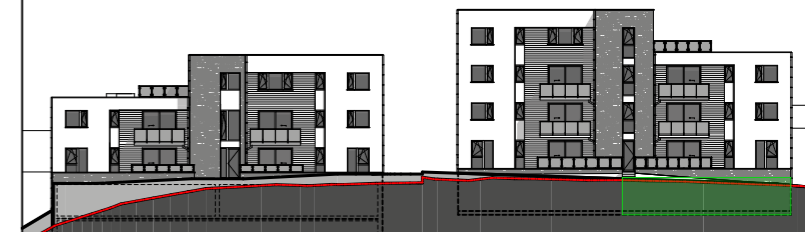




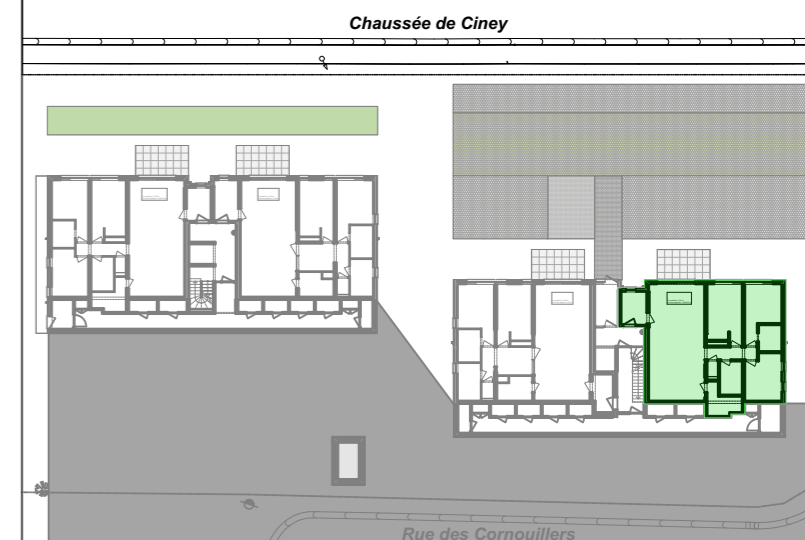
FACADE AVANT



FACADE ARRIERE

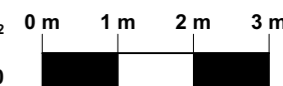


PLAN GENERAL



## APPARTEMENT L 2.1

NIVEAU :	CAVES / REZ-JARDIN
CHAMBRES :	3
PIECE(S) ANNEXE(S) :	DRESSING
SURFACE BRUTE :	118,37 m <sup>2</sup>
SURFACE NETTE :	99,88 m <sup>2</sup>
SURFACE TERRASSE :	10,08 m <sup>2</sup>
ECHELLE :	1/100



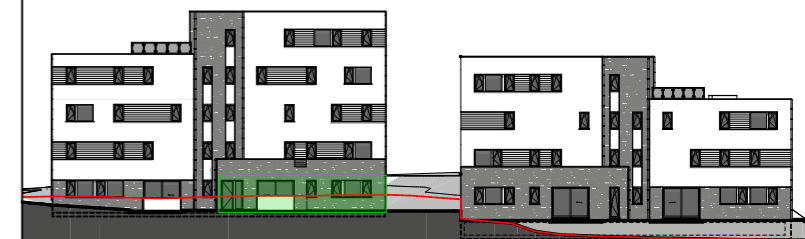
**ACCES**  
**HABITAT**  
PROMOTEUR

**UrbanÉco**  
APPARTEMENTS LUXUEUX,  
ÉCONOMES & ÉCOLOGIQUES

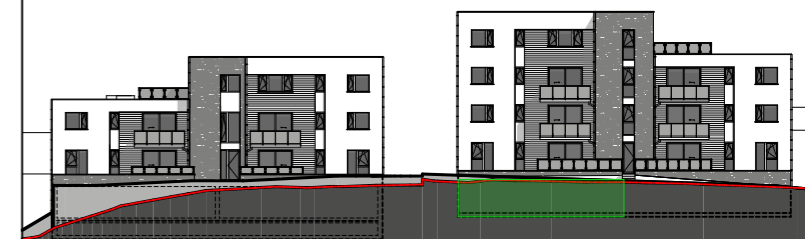




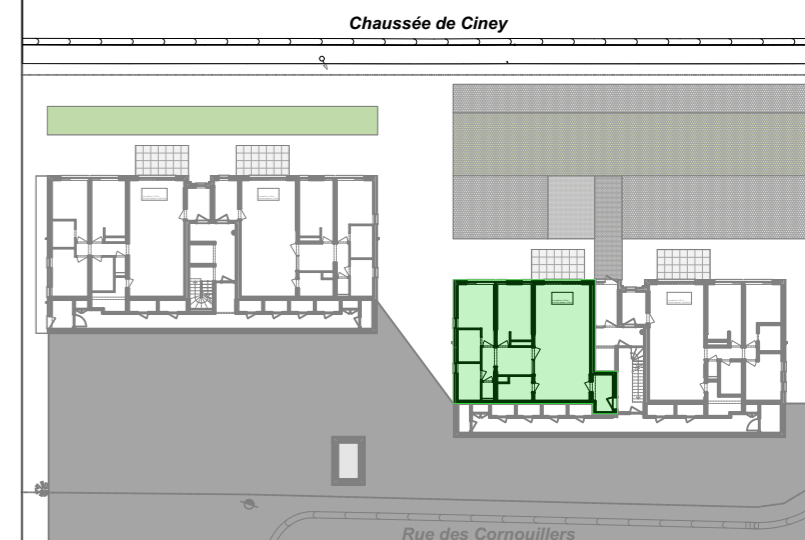
FACADE AVANT



FACADE ARRIERE

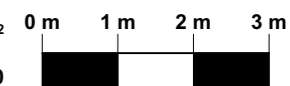


PLAN GENERAL



## APPARTEMENT L 2.2

NIVEAU :	CAVES / REZ-JARDIN
CHAMBRES :	2
PIECE(S) ANNEXE(S) :	BUREAU & DRESSING
SURFACE BRUTE :	114,96 m <sup>2</sup>
SURFACE NETTE :	96,25 m <sup>2</sup>
SURFACE TERRASSE :	10,08 m <sup>2</sup>
ECHELLE :	1/100



**ACCES**  
**HABITAT**  
PROMOTEUR

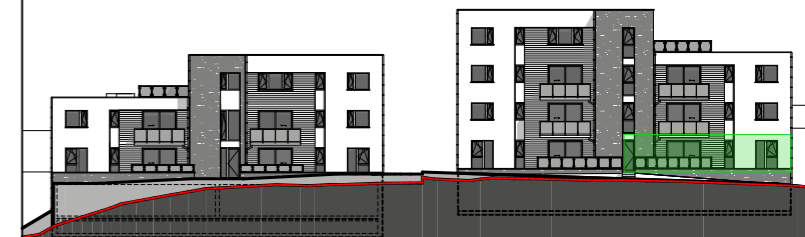
**UrbanÉco**  
APPARTEMENTS LUXUEUX,  
ÉCONOMES & ÉCOLOGIQUES



FACADE AVANT



FACADE ARRIERE

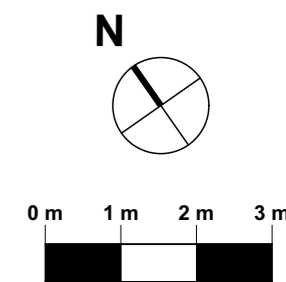


PLAN GENERAL



## APPARTEMENT L 2.3

NIVEAU :	RDC
CHAMBRES :	2
PIECE(S) ANNEXE(S) :	BUREAU
SURFACE BRUTE :	117,48 m <sup>2</sup>
SURFACE NETTE :	97,28 m <sup>2</sup>
SURFACE TERRASSE :	10,03 m <sup>2</sup>
ECHELLE :	1/100

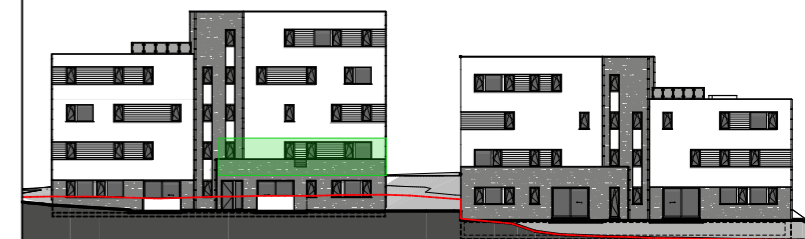


**ACCES**  
**HABITAT**  
PROMOTEUR

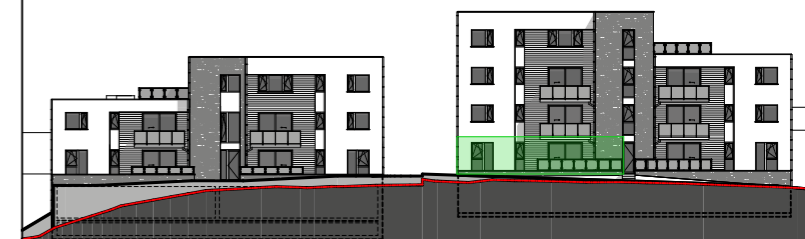
**UrbanÉco**  
APPARTEMENTS LUXUEUX,  
ÉCONOMES & ÉCOLOGIQUES



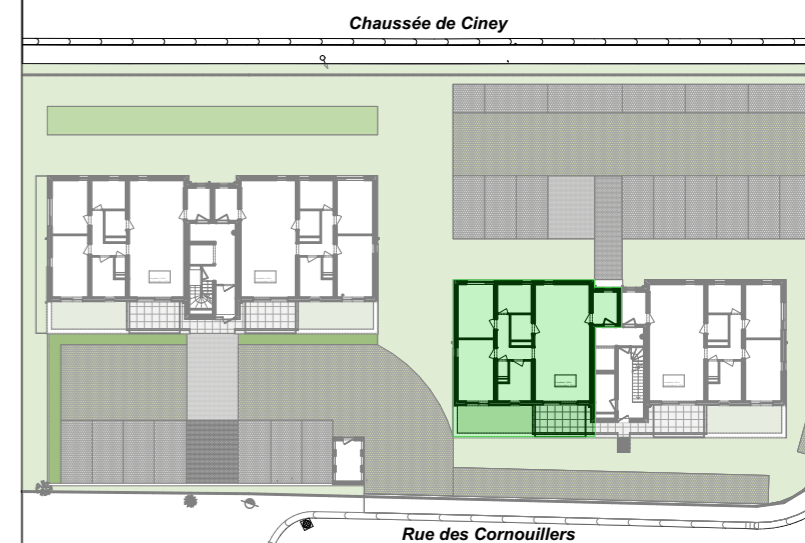
FACADE AVANT



FACADE ARRIERE

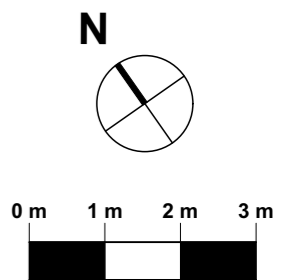


PLAN GENERAL



## APPARTEMENT L 2.4

NIVEAU :	RDC
CHAMBRES :	2
PIECE(S) ANNEXE(S) :	BUREAU
SURFACE BRUTE :	117,48 m <sup>2</sup>
SURFACE NETTE :	97,28 m <sup>2</sup>
SURFACE TERRASSE :	10,03 m <sup>2</sup>
ECHELLE :	1/100



**ACCES**  
**HABITAT**  
PROMOTEUR

**UrbanÉco**  
APPARTEMENTS LUXUEUX,  
ÉCONOMES & ÉCOLOGIQUES



FACADE AVANT



FACADE ARRIERE



PLAN GENERAL

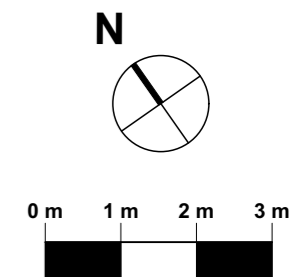
*Chaussée de Ciney*



*Rue des Cornouillers*

## APPARTEMENT L 2.5

NIVEAU :	ETAGE 1
CHAMBRES :	2
PIECE(S) ANNEXE(S) :	BUREAU
SURFACE BRUTE :	117,48 m <sup>2</sup>
SURFACE NETTE :	97,28 m <sup>2</sup>
SURFACE TERRASSE :	10,00 m <sup>2</sup>
ECHELLE :	1/100



**ACCES**  
**HABITAT**  
PROMOTEUR

**UrbanÉco**  
APPARTEMENTS LUXUEUX,  
ÉCONOMES & ÉCOLOGIQUES



FACADE AVANT

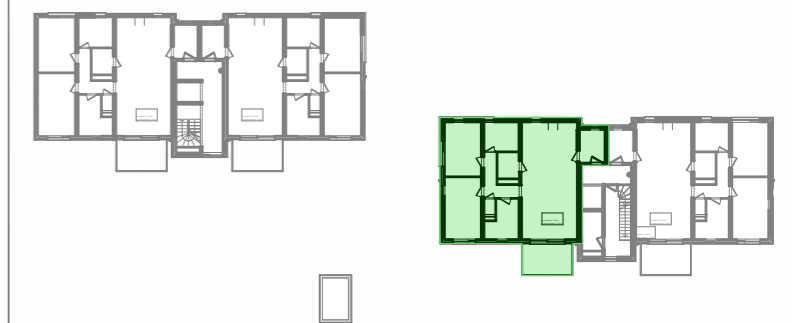


FACADE ARRIERE



PLAN GENERAL

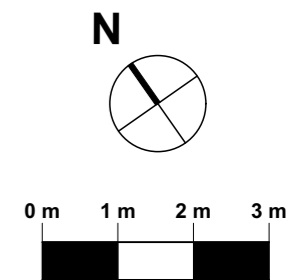
*Chaussée de Ciney*



*Rue des Cornouillers*

## APPARTEMENT L 2.6

NIVEAU :	ETAGE 1
CHAMBRES :	2
PIECE(S) ANNEXE(S) :	BUREAU
SURFACE BRUTE :	117,48 m <sup>2</sup>
SURFACE NETTE :	97,28 m <sup>2</sup>
SURFACE TERRASSE :	10,00 m <sup>2</sup>
ECHELLE :	1/100

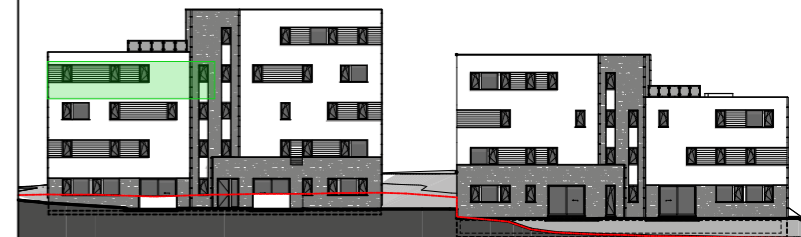


**ACCES**  
**HABITAT**  
 PROMOTEUR

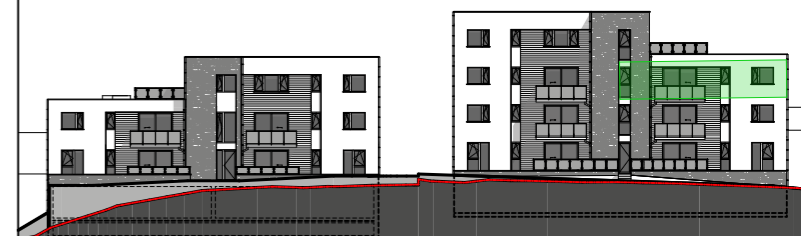
**UrbanÉco**  
 APPARTEMENTS LUXUEUX,  
 ÉCONOMES & ÉCOLOGIQUES



FACADE AVANT



FACADE ARRIERE



PLAN GENERAL

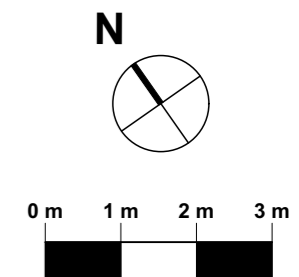
*Chaussée de Ciney*



*Rue des Cornouillers*

## APPARTEMENT L 2.7

NIVEAU :	ETAGE 2
CHAMBRES :	2
PIECE(S) ANNEXE(S) :	BUREAU
SURFACE BRUTE :	117,48 m <sup>2</sup>
SURFACE NETTE :	98,86 m <sup>2</sup>
SURFACE TERRASSE :	10,00 m <sup>2</sup>
ECHELLE :	1/100

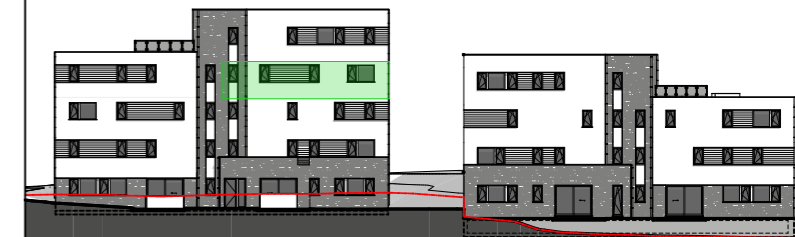


**ACCES**  
**HABITAT**  
 PROMOTEUR

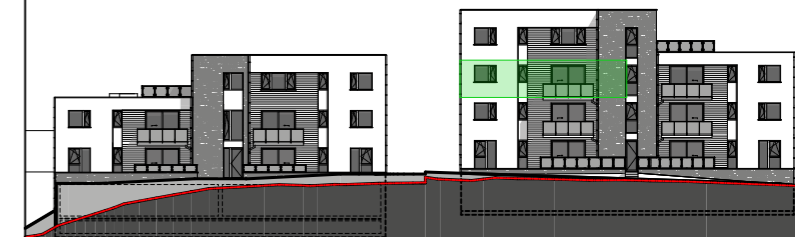
**UrbanÉco**  
 APPARTEMENTS LUXUEUX,  
 ÉCONOMES & ÉCOLOGIQUES



FACADE AVANT

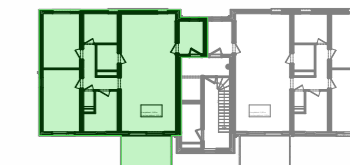


FACADE ARRIERE



PLAN GENERAL

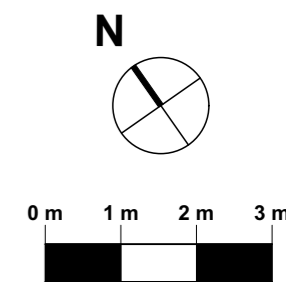
Chaussée de Ciney



Rue des Cornouillers

## APPARTEMENT L 2.8

NIVEAU :	ETAGE 2
CHAMBRES :	2
PIECE(S) ANNEXE(S) :	BUREAU
SURFACE BRUTE :	117,48 m <sup>2</sup>
SURFACE NETTE :	98,86 m <sup>2</sup>
SURFACE TERRASSE :	10,00 m <sup>2</sup>
ECHELLE :	1/100



**ACCES**  
**HABITAT**  
PROMOTEUR

**UrbanÉco**  
APPARTEMENTS LUXUEUX,  
ÉCONOMES & ÉCOLOGIQUES